

UPGRADABLE TO
ADAS
CALIBRATION



TESLA &
McLAREN
Compatible



MAXISYS 919



£3,995 excl. VAT

1 Years Updates

- Extended 2 years warranty
- 1 year Software free updates included
- MaxiFlash VCMi included

The all new MaxiSYS MS919 shares exactly the same software and multi-purpose VCMi as the Ultra, but the diagnostic tablet is without docking station, has a smaller screen and smaller memory. The great news is that the MS919 represents excellent value for money, retaining all the software and VCMi features of the Ultra.

The MS919 combines diagnostics, service, extensive live data, channel coding and ECU re-flashing*. The MS919 has our MaxiFLASH VCMi with built-in Oscilloscope, Multimeter, Signal Generator and OBD Bus Check Functions, and connects to the Ultra using WiFi, so greatly increasing the communication speeds. The all new VCMi also has Enhanced Protocol Compatibility and supports D-PDU, RP1210, CANFD, J2534 and DoIP protocols.

The MS919 has all new software specialist capabilities that we have named Repair Assist, DTC Analysis, Topology Mapping and Relevant Cases.

See pages 8 - 11 for more information.

Specifications

[COMPARISON TABLE](#) [P.17](#)

- Android 7.0
- 2,3Ghz + 1,7Ghz Samsung Exnos 8895v Octa-Core
- 128GB internal memory
- 4GB RAM
- 9.7" 2048 x 1536 TFT-LCD Corolle Glass
- Ultra fast power on
- 15,000mAh Lithium-Polymer Battery
- Oil and Water screen resistant

Software Updates + Bolt-ons

Future 12 months Update
£1,195 excl. VAT

ADAS Software Upgrade
£850.00 excl. VAT

Optional Compatible Accessories



MaxiVideo MV105
£139 excl. VAT



ADAS Main frame
from £7,995 excl. VAT



BT506
£160 excl. VAT







ITS600
£399 excl. VAT

FCA
GATEWAY

FCA Gateway License
£139 excl. VAT



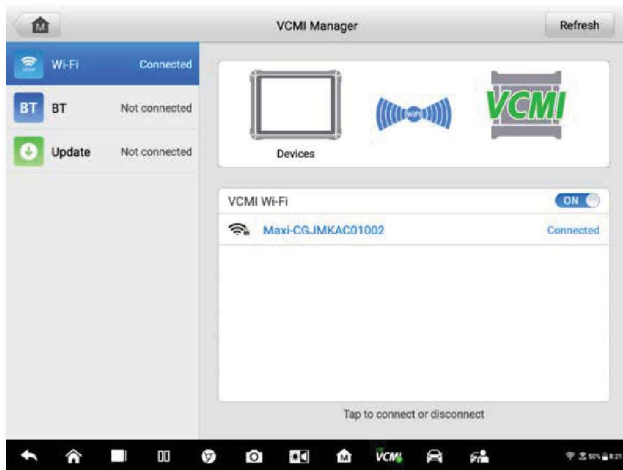
TBE100 or TBE200
£320 or £399 excl. VAT

-  Built-In Oscilloscope
-  Built-In Waveform Generator
-  Built-In Multimeter
-  Built-In CAN bus Check



MaxiSYS MS919 includes a number of great features such as outstanding coverage with 80+ manufacturers, full diagnostics, 26 service functions, channel coding and programming.

The MS919 can be upgraded to operate our ADAS products.



High Speed Wifi VCMi Connection

Tool Case includes:

- USB Cable
- Main Cable
- Ethernet Cable
- Light Fuse
- Cigarette Lighter
- AC/DC Adapter
- Clipper Cable
- Scope Test Lead x 4
- Multimeter Test Lead x 2
- Attenuator x 2
- Breakout Lead x 4
- Multimeter Probe x 2
- Flexible Back-Pinning Probe x 2
- Back-Pinning Probe x 2
- Back-Pinning Probe Screw x 2
- Back-Pinning Probe Replacement Needle x 20
- Small Crocodile Clip x 2
- Large Dolphin Clip x 2

Our additional Oscilloscope Accessory Kit can be purchased separately and includes the further items of 1 x 65Amp Current Clamp, 1 x 650Amp Current Clamp, 1 x Coil On Plug Probe, 2 x HT Extension Leads and 2 x Battery Clips. **Please see the accessories on page 23.**

All New Software Capabilities



System Topology



Relevant Cases



Tech Bulletins



Repair Assist



DTC Analysis